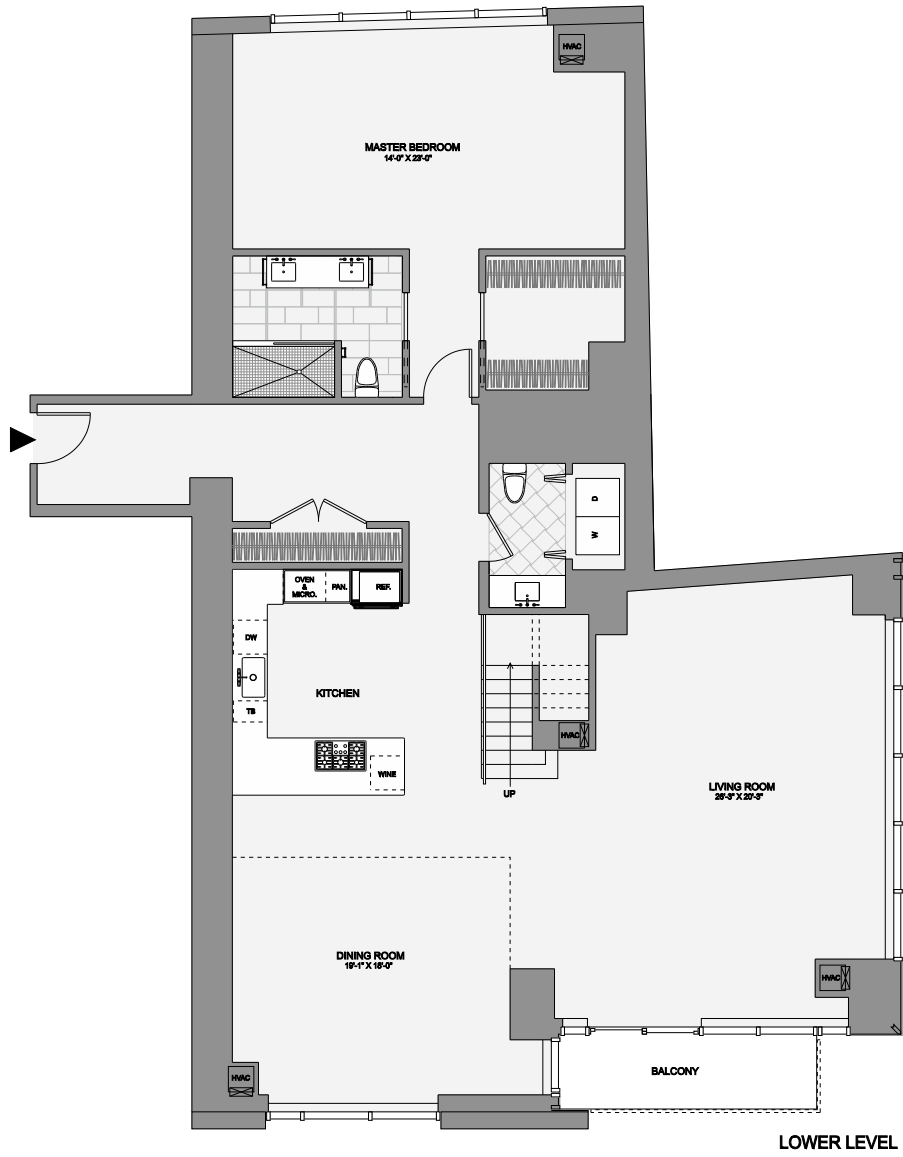
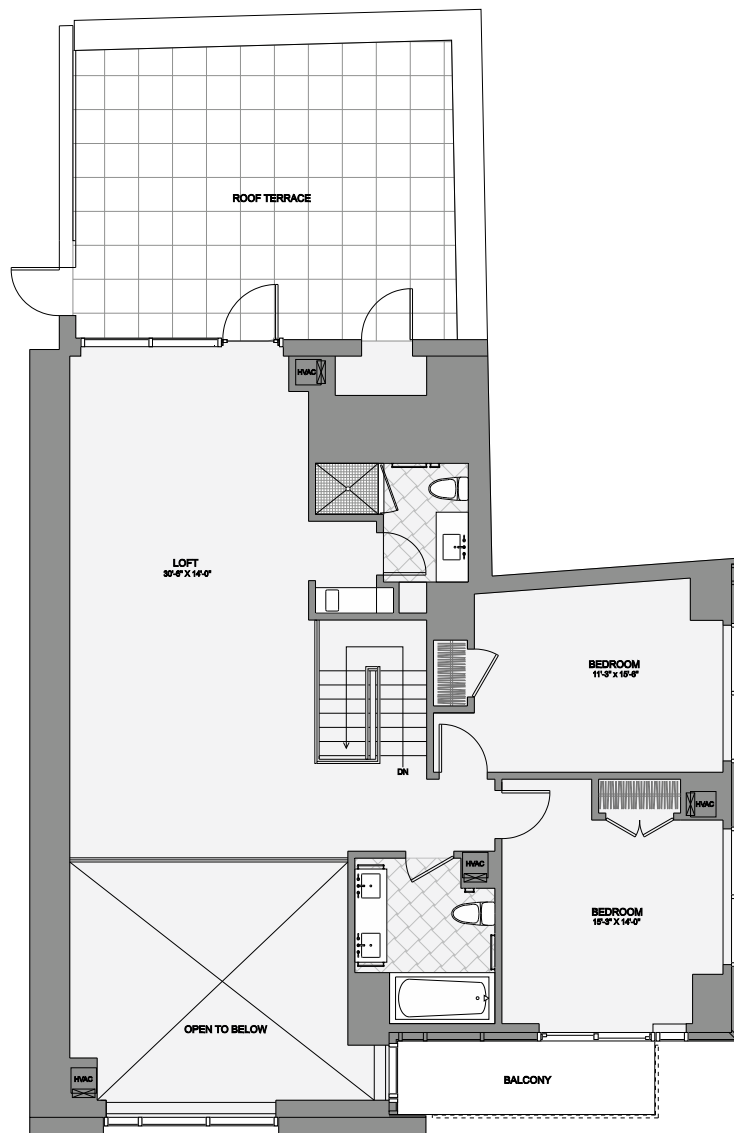


UNIT 2404  
 PREMIER 3 BEDROOM, 3 BATH, LOFT  
 3,319 SF



LOWER LEVEL



UPPER LEVEL

**45** PROVINCE  
 CONDOMINIUM

AT 45 PROVINCE STREET • BOSTON, MASSACHUSETTS 02108 • ph: 617.742.0942 • fax: 617.742.0940 • www.45province.com

Floor plans are for presentation purposes only. Layout and all dimensions are approximate, and may vary from the "as built" plans due to uniqueness of the building and construction conditions and circumstances. The developer reserves the right to make alterations and substitutions at any time.

